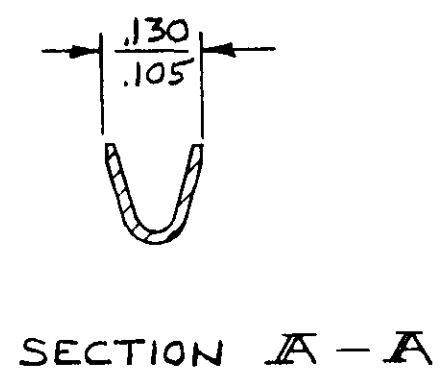
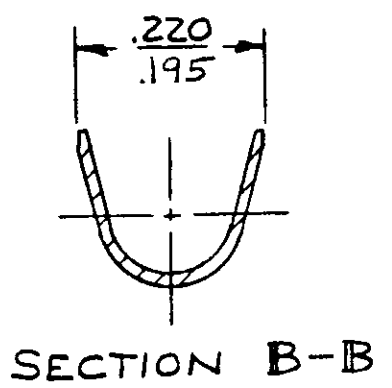
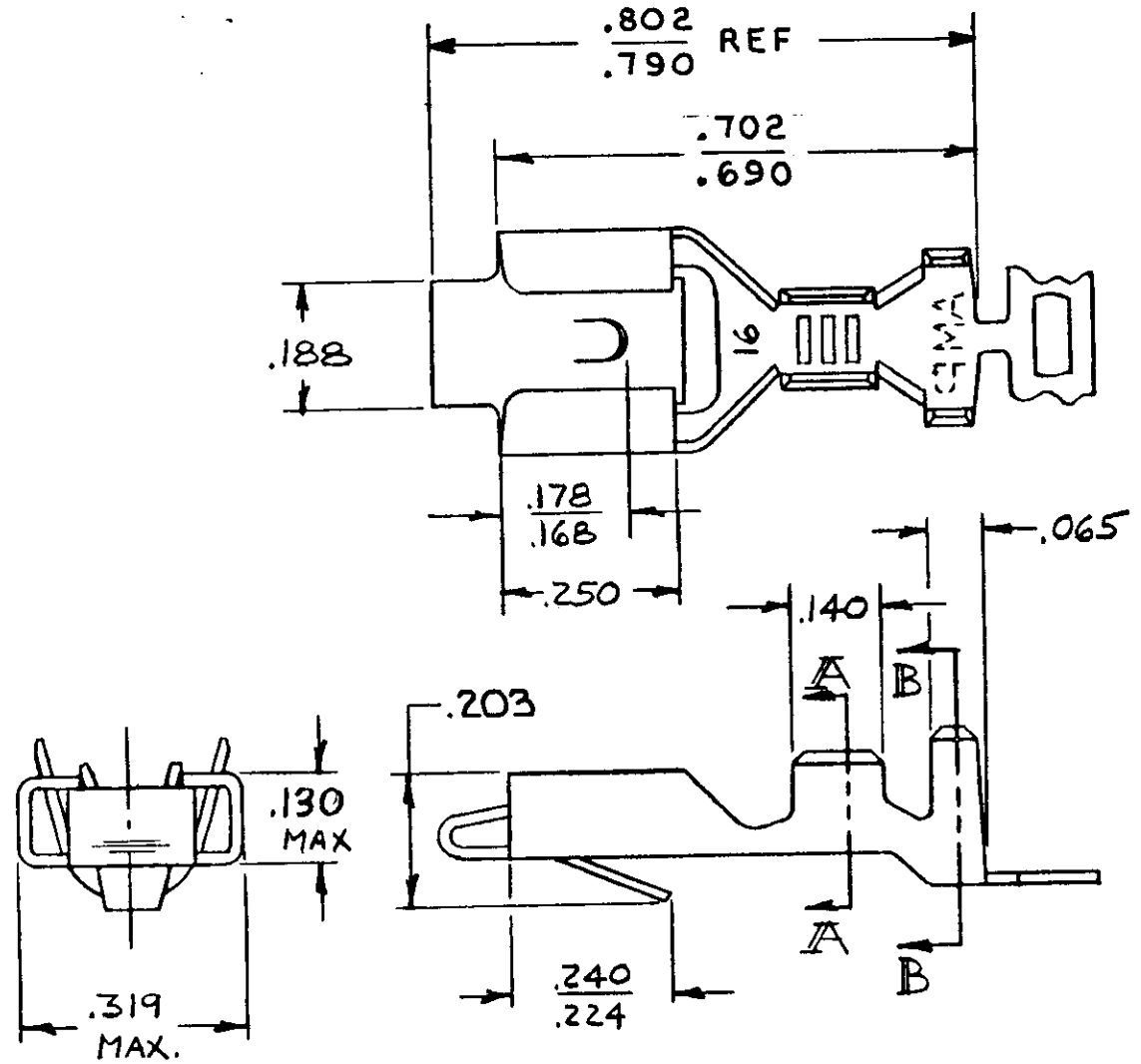


© COPYRIGHT 1978 BY AMP INCORPORATED, HARRISBURG, PA.  
 ALL INTERNATIONAL RIGHTS RESERVED. AMP INCORPORATED PRODUCTS  
 COVERED BY U. S. AND FOREIGN PATENTS AND/OR PATENTS PENDING.

		REVISIONS				
P	Y	ZONE	LTR	DESCRIPTION	DATE	APPROVED
	✓		0	REL. NEW DRAWING M-4819	5/24/78	DMS
A			A	REV PER ECN AG-30	10-12-83	TEB KW
✓			A1	RESTORATION	5-85	NS / NJ
✓			B	OBSOLETE -2 PER ECN CM 473	2-19-86	CM/RS
✓			C	REV PER ECN CM 654	7/29/86	TB/RS
✓			D	REVISE PER CM-1237	10-5-87	PKC TB
			E	REV PER 0710-0427-95	26/SEP/95	PMF



	FINISH	.145 MAX	20-16 AWG	640841-1
		INSULATION RANGE	WIRE SIZE	PART NO
UNLESS OTHERWISE SPECIFIED DIMENSIONS ARE IN INCHES. TOLERANCES ON: DECIMALS ± .015 ANGLES ± 1°	CONTRACT NO	AMP INCORPORATED Harrisburg, Pa.		
	DR			
MATERIAL	CHK	NAME		
.018 BRASS	D.A. SALTZER	.250 BLADE RECEPTACLE		
FINISH	APPD	SIZE	CODE IDENT NO	DRAWING NO
SEE TABLE	APPD	B	00779	640841
	DSGN APPD	SCALE		SHEET
	OTHER APPD			